

Technical specifications

52MC

building dreams together



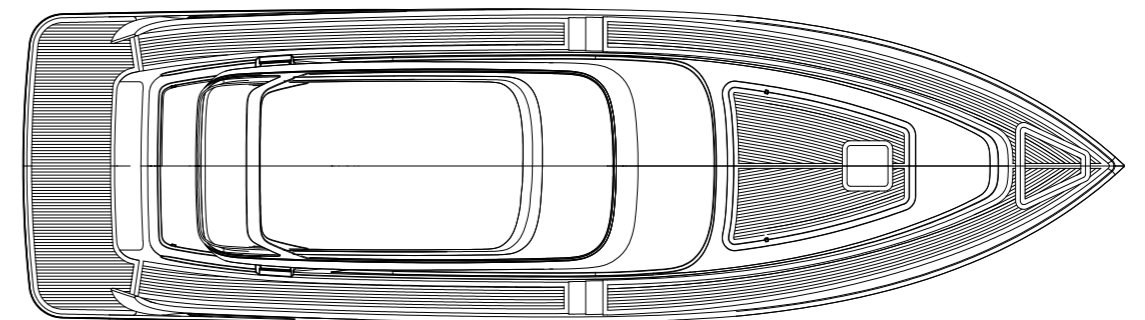
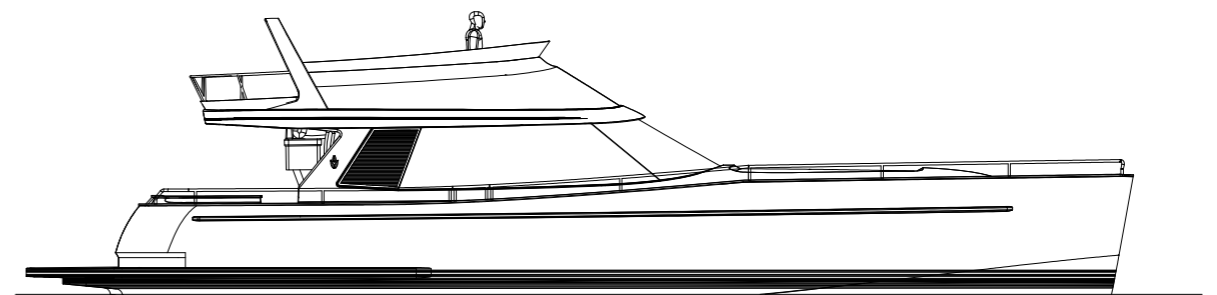
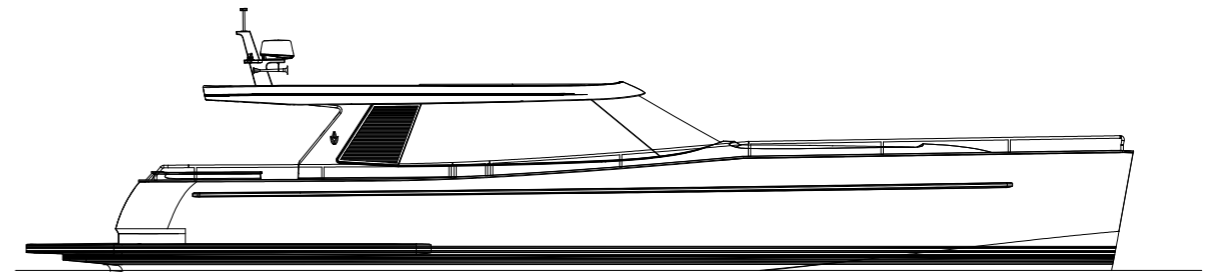
42CS 45CS 52CS 57CS 62CS 67CS 72CS 85CS **52MC**

building dreams together

Together we make boating ambitions a reality... so you can embrace your own personal dream. Working closely with owners, every single Contest yacht, both motor and sail, is designed and detailed to match individual desires. Together we begin with meticulous preparation, involving specialists and suppliers for every aspect and element. Founded in 1959, and with the stability of the third generation of the same boatbuilding family, we run our yard in Medemblik, Holland with a highly skilled team of accomplished, caring craftsmen to hand-build yachts from 42ft to 85ft (13m-26m). A Contest yacht brings pride in performance and confidence in the roughest of conditions. Together the ideal combination.

Contest Yachts
Overleek 5
1671 GD Medemblik
The Netherlands
tel +31 (0)227 543 644
fax +31 (0)227 545 037
info@contestyachts.com
www.contestyachts.com

Side & deck layout





52MC FASTLANE



52MC OPEN SPORT - CLASSIC



52MC OPEN SPORT



52MC FLYBRIDGE



52MC OPEN SPORT - T-TOP





Interior layout

INTERIOR LAYOUT A



INTERIOR LAYOUT A SALOON



INTERIOR LAYOUT B



INTERIOR LAYOUT B SALOON



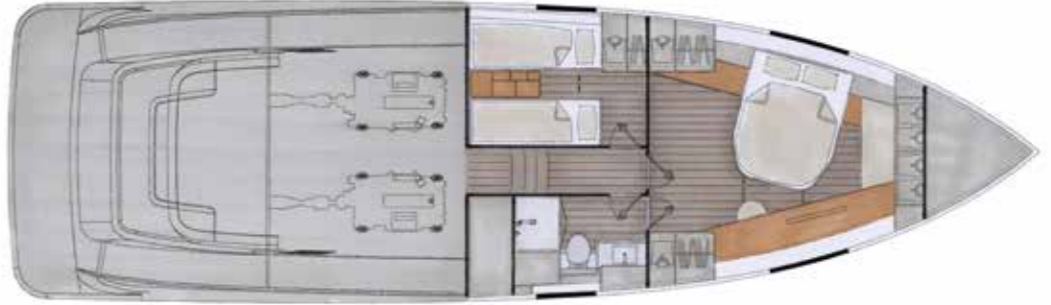
INTERIOR LAYOUT C



INTERIOR LAYOUT C SALOON



INTERIOR LAYOUT D



INTERIOR LAYOUT E



INTERIOR LAYOUT F



INTERIOR LAYOUT G



1 Main dimensions

Specifications

Length overall	15.93 m	52.26 ft
Length waterline	14.60 m	47.9 ft
Maximum beam	4.60 m	15.09 ft
Draft	0.85 m	2.79 ft
Displacement (standard version):	16,600 kg	36,596 lbs
Fuel tank	1,800 ltr	395.95 imp. gal.
Water tank	400/700 ltr	88/153.98 imp. gal.
Engines, Cummins	2 x 225 kW	2 x 305 hp

Maximum height above waterline

52MC Fastlane	2.88 m	9.45 ft
52MC Flybridge	3.74 m	12.27 ft
52MC Open Sport	2.88 m	9.45 ft

2 Construction

2.1 General

Hull and deck are made of high quality materials. Several interior arrangements are available within the structural bulkheads and keel grid.

2.2 Hull

- ▶ Hull in sandwich, vacuum infused composite with the Conyplex vacuum infusion system®.
- ▶ Laminate consisting of quadraxial and biaxial E-glass for inner and outer skins, infused with vinylester resin.
- ▶ Local unidirectional E-glass reinforcements.
- ▶ Solid laminate in structural areas like the keel area.
- ▶ First layer after gelcoat is a special barrier coat.
- ▶ Structural bulkheads fully bonded to hull and deck.
- ▶ Teak toe rail capping, integrated rubbing strake.
- ▶ Two year warranty.
- ▶ Hull: gelcoat white.
- ▶ Stripe and waterlines: colour owner's choice.
- ▶ Antifouling: two layers.

2.3 Deck

- ▶ Deck in sandwich, vacuum infused composite with the Conyplex vacuum infusion system®.
- ▶ Deck: gelcoat white.
- ▶ Laminate consisting of quadraxial and biaxial E-glass for inner and outer skins.
- ▶ Local unidirectional E-glass reinforcements.
- ▶ Solid laminate in structural areas where deck equipment is fitted.

2.4 Construction

- ▶ Vacuum infused composite structural bulkheads in sandwich, using the Conyplex vacuum infusion system®.
- ▶ Vacuum infused composite longitudinals in sandwich, using the Conyplex vacuum infusion system®.

2.5 Rudder

- ▶ Two stainless steel rudders.
- ▶ Stainless steel rudder axe.

3 Deck layout

- ▶ Large aft cockpit.
- ▶ Fixed varnished cockpit table with stainless steel 316 support for table and canvas cover for UV protection.
- ▶ Two alcoves for storage of small deck gear.
- ▶ Garage below the cockpit floor. Reachable from the cockpit and transom.
- ▶ Transomdoor with remote control.

3.2 Hatches and windows

- ▶ Four flush hull windows.
- ▶ Chemical hardened, laminated panoramic windows in saloon.
- ▶ Opening flush skylight hatch.
- ▶ Opening port lights in superstructure.
- ▶ Flush teak covered aluminium deck hatches.
- ▶ Windscreen wiper system incl. windscreen washing system.
- ▶ Stainless steel 316 guardrails 40 cm high.
- ▶ Stainless steel 316 bathing ladder.
- ▶ Stainless steel 316 fillers.
- ▶ Stainless steel 316 anti-chafe rails below mooring cleats.
- ▶ Stainless steel 316 mooring cleats: two cleats forward, two cleats amidships and two cleats aft.
- ▶ Flagpole with stainless steel 316 support.
- ▶ Boat hook in aluminium.
- ▶ Six fenders with socks and ropes.
- ▶ Six 25 m 18 mm mooring warps.

3.5 Anchor system

- ▶ Integrated anchor launching system in bow.
- ▶ 20 kg Delta anchor with 50 m galvanised 10 mm anchor chain.
- ▶ Anchor chain marked each 10m.

3.6 Steering system

- ▶ Power assisted hydraulic steering system.
- ▶ Compass.

4 Interior

4.1 General

As with all Contest Yachts the interior will be fully made at our own yard in Medemblik, with great attendance to flexibility and detailing.

4.2 Standard features

- ▶ Light oak joinery.
- ▶ Oak floor.
- ▶ Matt varnished.
- ▶ Chrome fittings throughout.
- ▶ Padded side panelling.
- ▶ Padded sections throughout the boat.
- ▶ Shower stalls with thermostatic mixer.
- ▶ Doors with anti-rattle door locks.
- ▶ Corian worktops in galley.
- ▶ Corian tops in each head with washbasins.
- ▶ Design taps.
- ▶ Two zone induction hob.
- ▶ Quality curtain blinds for portholes and skylight hatches.
- ▶ Quality curtain blinds for portholes.
- ▶ Quality curtain blinds behind padded panels for hull windows.
- ▶ Sprung slats owner's cabin.
- ▶ Overhead lights in all cabins.
- ▶ Dimmers on overhead lights in saloon.
- ▶ LED ceiling lights.
- ▶ Careful noise reduction throughout.
- ▶ Engine room well insulated.
- ▶ Comfortable mattresses in all cabins.
- ▶ 36-set (6 persons) of Contest Yachts porcelain crockery.
- ▶ Waste bin in galley.
- ▶ Extensive mirrors in heads.

5 Systems & equipment

5.1 Engine

- ▶ Spacious engine room with easy access from top side.
- ▶ 2 x Cummins QSB6.7 224kW (305hp) 2600 rpm 6 cylinder turbo-charged diesel engine.
- ▶ Indirect cooling.
- ▶ Hurth ZF 85A Hydraulic gearbox.
- ▶ Cummins dual lever control fitted in dashboard.
- ▶ Cummins Inboard Joystick docking system, joystick fitted in dashboard.
- ▶ VesselView 7" engine information display fitted in dashboard including rev. Counter, oil pressure- temperature, charge alarm, runtime and trolling.
- ▶ Water cooled exhaust with water lock.
- ▶ Stern tubes with water lubricated bearings and water seal.
- ▶ V-bracket propeller shafts.
- ▶ Stainless steel propeller shafts with thrust bearing and flexible coupling.
- ▶ Five bladed propeller in bronze.
- ▶ Engine room insulated with combined drone- and sound absorbing insulation.
- ▶ Engine room ventilation by double electric ventilators and natural ventilation grills.
- ▶ Automatic engine room fire extinguish system.

5.2 Additional propulsion systems

- ▶ 9.4 hp (160 kgf) electric bow thruster.
- ▶ Trim tabs.

5.3 Fuel system

- ▶ Fuel tank capacity 1,800 litres.
- ▶ Sump on fuel day tank with drain pump.
- ▶ Double fuel filter with water separator. Acoustic and visual "water in fuel" alarm.
- ▶ Diesel tank level gauge on switch panel.

5.4 Fresh water system

- ▶ Pressurized hot & cold water system.
- ▶ Water tank capacity 700 litres.
- ▶ Water heater 40 litres with heat exchanger to engine and 750 W immersion heating element.
- ▶ Thermostat taps in galley and heads.
- ▶ Water tank level gauge on switch panel.
- ▶ Stern shower.

5.5 Bilge system

- ▶ Electric bilge pump in sump, with automatic switch and manual backup.
- ▶ Electric bilge pump in engine room, with automatic switch and manual backup.
- ▶ Electric bilge pump in storage room with automatic switch and manual backup.
- ▶ Grey water pump equipped with flexible hose for water discharge in any compartment.

5.6 Black & grey water system

- ▶ Two electric flush fresh water toilets.
- ▶ Waste water tank.
- ▶ Indicator on black water tank indicating full or empty.
- ▶ Shower stalls with automatic drain.
- ▶ Grey water system with collection tank and automatic discharge.

5.7 Refrigeration system

- ▶ Refrigerator in galley.

5.8 Safety equipment

- ▶ Three foam fire extinguishers 2 kg.
- ▶ Fire blanket.
- ▶ Automatic fire extinguish system in engine room.

6 Electrical systems

6.1 AC/DC systems

- ▶ 24 VDC and 230 VAC system on board.
- ▶ Dedicated technical area (electrical room) for switches and fuses.
- ▶ Standard energy pack:
 - ▶ Service batteries 400 Ah | 24 VDC
 - ▶ Start battery engine 2 x 100 Ah | 12 VDC
 - ▶ Combined inverter/charger, 1.800 W inverter, 35 A | 24 VDC battery charger
 - ▶ Battery charger start batteries 12 A | 24 VDC
 - ▶ Monitoring/control display batteries and combined inverter/charger
 - ▶ Alternator 70 A | 24 VDC start batteries engines
 - ▶ Alternator 140 A | 24 VDC service batteries group
- ▶ 230V - 50 Hz shore power connection:
 - ▶ Shore power 16 A
 - ▶ Shore power isolation transformer 3,5 kW | 16 A
 - ▶ Shore power socket for 230 VAC | 50 Hz shore power
 - ▶ Cable 25m with 3-pole CEE 16 A connector
- ▶ 230V socket in each cabin/compartment.
- ▶ All sea cocks under waterline are grounded.

6.2 Main switch panel

- ▶ Touch screen mounted at central position in ship.
- ▶ All main switches operated from the touch screen.
- ▶ Tank level gauges integrated in the touch screen.
- ▶ Easy power equipment monitoring.
- ▶ Indication light "shore power present"
- ▶ Alarms on touch screen (overriding all pages) for:
 - ▶ Running bilge pump
 - ▶ Fire extinguish system engine room
 - ▶ Water in fuel
 - ▶ Battery level
 - ▶ Black water tanks

The Contest range



MAIN DIMENSIONS 42CS

Length overall	12.85 m	42.15 ft
Length waterline	11.76 m	38.63 ft
Maximum beam	4.15 m	13.61 ft
Displacement	11,000 kg	24,251 lbs



MAIN DIMENSIONS 45CS

Length overall	13.70 m	44.9 ft
Length waterline	11.64 m	38.19 ft
Maximum beam	4.10 m	13.3 ft
Displacement	13,500 kg	27,760 lbs



MAIN DIMENSIONS 50CS

Length overall	14.99 m	49.18 ft
Length waterline	13.13 m	43.08 ft
Maximum beam	4.58 m	15.03 ft
Displacement	17,500 kg	38,580 lbs



MAIN DIMENSIONS 57CS

Length overall	17.23 m	56.5 ft
Length waterline	15.55 m	51.0 ft
Maximum beam	5.12 m	16.8 ft
Displacement	27,900 kg	61,508 lbs



MAIN DIMENSIONS 62CS

Length overall	19.18 m	63.9 ft
Length waterline	16.80 m	55.1 ft
Maximum beam	5.45 m	17.9 ft
Displacement	31,000 kg	68,563 lbs



MAIN DIMENSIONS 67CS

Length overall	21.26 m	69.75 ft
Length waterline	21.71 m	71.22 ft
Maximum beam	5.65 m	18.5 ft
Displacement	39,500 kg	87,081 lbs



MAIN DIMENSIONS 72CS

Length overall	21.80 m	71.5 ft
Length waterline	18.99 m	62.3 ft
Maximum beam	5.70 m	18.7 ft
Displacement	44,300 kg	97,664 lbs



MAIN DIMENSIONS 85CS

Length overall	25.82 m	84.71 ft
Length waterline	23.17 m	76.02 ft
Maximum beam	6.40 m	21 ft



MAIN DIMENSIONS 52MC FASTLANE

Length overall	15.93 m	52.26 ft
Length waterline	14.60 m	47.9 ft
Maximum beam	4.60 m	15.09 ft
Displacement	16,600 kg	36,596 lbs
Maximum height above waterline	2.88 m	9.45 ft



MAIN DIMENSIONS 52MC FLYBRIDGE

Length overall	15.93 m	52.26 ft
Length waterline	14.60 m	47.9 ft
Maximum beam	4.60 m	15.09 ft
Displacement	18,500 kg	40,785 lbs
Maximum height above waterline	3.74 m	12.27 ft



MAIN DIMENSIONS 52MC OPEN SPORT

Length overall	15.93 m	52.26 ft
Length waterline	14.60 m	47.9 ft
Maximum beam	4.60 m	15.09 ft